

Cyberport Tenant Bus Service (wef. 1st May 2019)

Route 1: Between Mei Foo and Cyberport (via Western Harbour Tunnel)

Morning trip : Mei Foo → Cyberport (Annex → Cyberport 3)

Evening trip : Cyberport (Arcade) → Mei Foo

Departure time

From Mei Foo : 08:10 08:15 08:25

From Cyberport : 18:05 18:15 18:30

Passengers can connect to the MTR Tsuen Wan Line and West Rail Line at nearby MTR Mei Foo Station.

Route 2: Between Tai Wai and Cyberport (via Western Harbour Tunnel)

Morning trip : Tai Wai → Cyberport (Annex → Cyberport 3)

Evening trip : Cyberport (Annex) → Tai Wai

Departure time

From Tai Wai : 08:05 08:15 08:25 08:40

From Cyberport : 18:10 18:20 18:30 18:40

Passengers can connect to the East Rail Line and Ma On Shan Line.

Route 3: Between Kowloon Tong and Cyberport (via Western Harbour Tunnel)

Morning trip : Kowloon Tong → Olympic → Cyberport (Annex → Cyberport 3)

Evening trip : Cyberport (Annex) → Olympic → Kowloon Tong

Departure time

From Kowloon Tong : 08:05 08:20 08:35

From Olympic : 08:20 08:35 08:50

From Cyberport : 18:00 18:25 19:05

Passengers can connect to the Tung Chung Line at nearby MTR Olympic station and the East Rail Line at nearby MTR Kowloon Tong Station respectively.

Route 4: Running between Hang Hau and Cyberport

(via Eastern Harbour Tunnel)

Morning trip : Hang Hau → Cyberport (Cyberport 3 → Arcade)

Evening trip : Cyberport (Annex) → Hang Hau

Departure time

From Hang Hau : 07:55

From Cyberport : 18:15

Passengers can connect to the MTR Tseung Kwan O Line at nearby Hang Hau MTR station.

Route 5: Running between Lam Tin and Cyberport

(via Eastern Harbour Tunnel)

Morning trip : Lam Tin → Cyberport (Cyberport 3 → Arcade)

Evening trip : Cyberport (Annex) → Lam Tin

Departure time

From Lam Tin : 08:15

From Cyberport : 18:10

Passengers can connect to the MTR Kwun Tong Line at nearby MTR Lam Tin station.

Route 6: Running between Sheung Wan and Cyberport

Morning trip : Sheung Wan → Sai Wan → Kennedy Town (Davis Street) →
Cyberport (Annex → Cyberport 3)

Evening trip : Cyberport (Arcade) → Kennedy Town (Catchick Street) →
Sheung Wan → Sai Wan

Departure time

From Sheung Wan : 08:15 08:30 08:45

From Sai Wan : 08:20 08:35 08:50

From Kennedy Town : 08:30 08:45 09:00

From Cyberport : 18:10 18:25 18:45

All routes will be running from Mondays to Fridays only (except Saturdays, Sundays and public holidays). Boarding and alighting points are indicated on the attached maps.

Payment Method

Tickets are available at Customer Service Counter on Level 1 of The Arcade, Cyberport from 10:00am to 10:00pm, Mondays to Sundays. You may also pay the fare by TNG Apps.

Fare

- Route 1: Cyberport ⇄ Mei Foo : HK\$20
- Route 2: Cyberport ⇄ Tai Wai : HK\$20
- Route 3: Cyberport ⇄ Olympic / Kowloon Tong : HK\$20
- Route 4: Cyberport ⇄ Hang Hau : HK\$16
- Route 5: Cyberport ⇄ Lam Tin : HK\$16
- Route 6: Cyberport ⇄ Kennedy Town / Sheung Wan / Sai Wan : HK\$7

QR Code for TNG E-Ticket



Starting from 3rd April 2017, \$1 fare discount would be rebated with TNG E-Ticket.

You may also visit <https://www.tngwallet.hk/en/cyberport-bus> to download the above QR codes. For more information, please visit <https://www.tngwallet.hk/>, contact TNG Customer Service Hotline at 3951 6268 or email to cs@tng.asia.

Location of Pick-up & Drop-Off Locations

Route 1A: Mei Foo – Morning Services 08:10 / 08:15 / 08:25

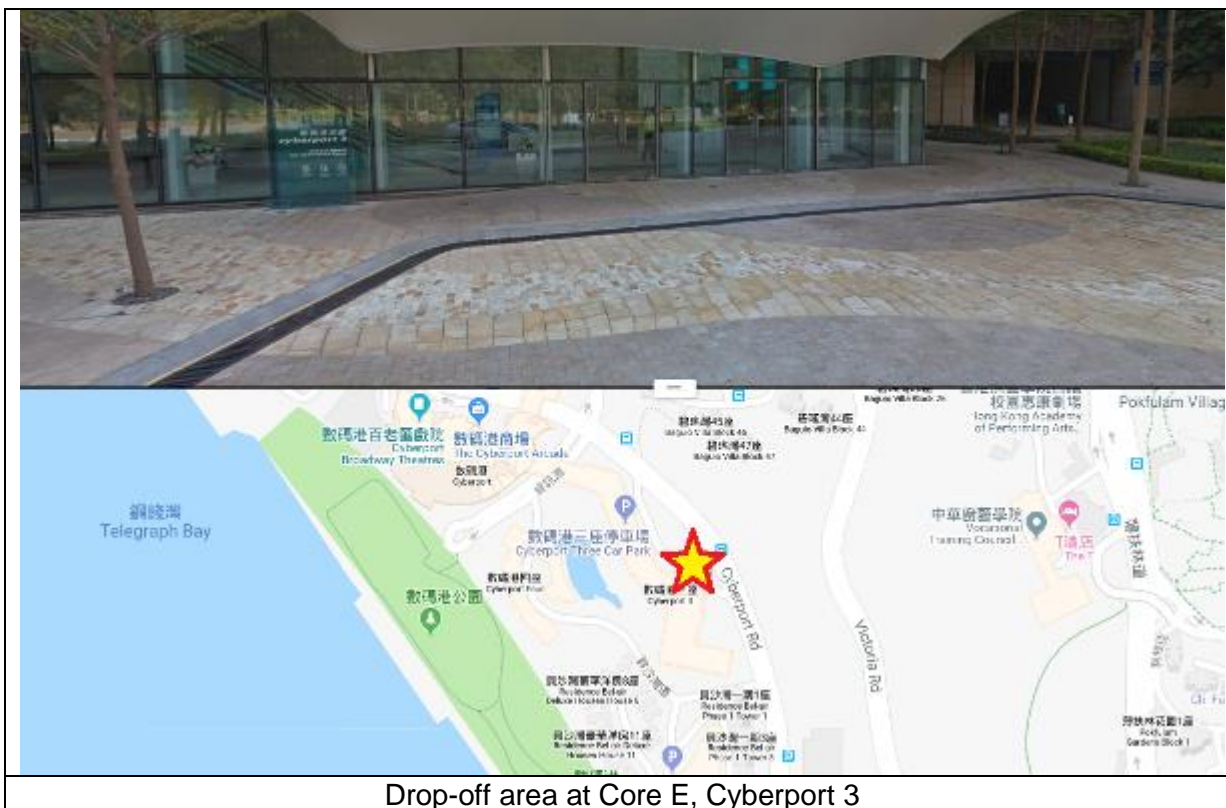
Mei Foo → Cyberport (Annex → Cyberport 3)



Mei Lai Road, Mei Foo - 08:10 / 08:15 / 08:25



The Annex (Outside McDonald's Restaurant)



Drop-off area at Core E, Cyberport 3

Route 1B: Mei Foo – Evening Services 18:05 / 18:15 / 18:30

Cyberport (The Arcade) → Mei Foo



Cyberport Facilities Management Office:
Unit 401, L4, IT Street, Core A,
Cyberport 3, 100 Cyberport Road, Hong Kong
Tel: 3166-3111 Fax: 3166-3100 Email: facility@cyberport.hk

Route 2A: Tai Wai – Morning Services 08:05 / 08:15 / 08:25 / 08:40

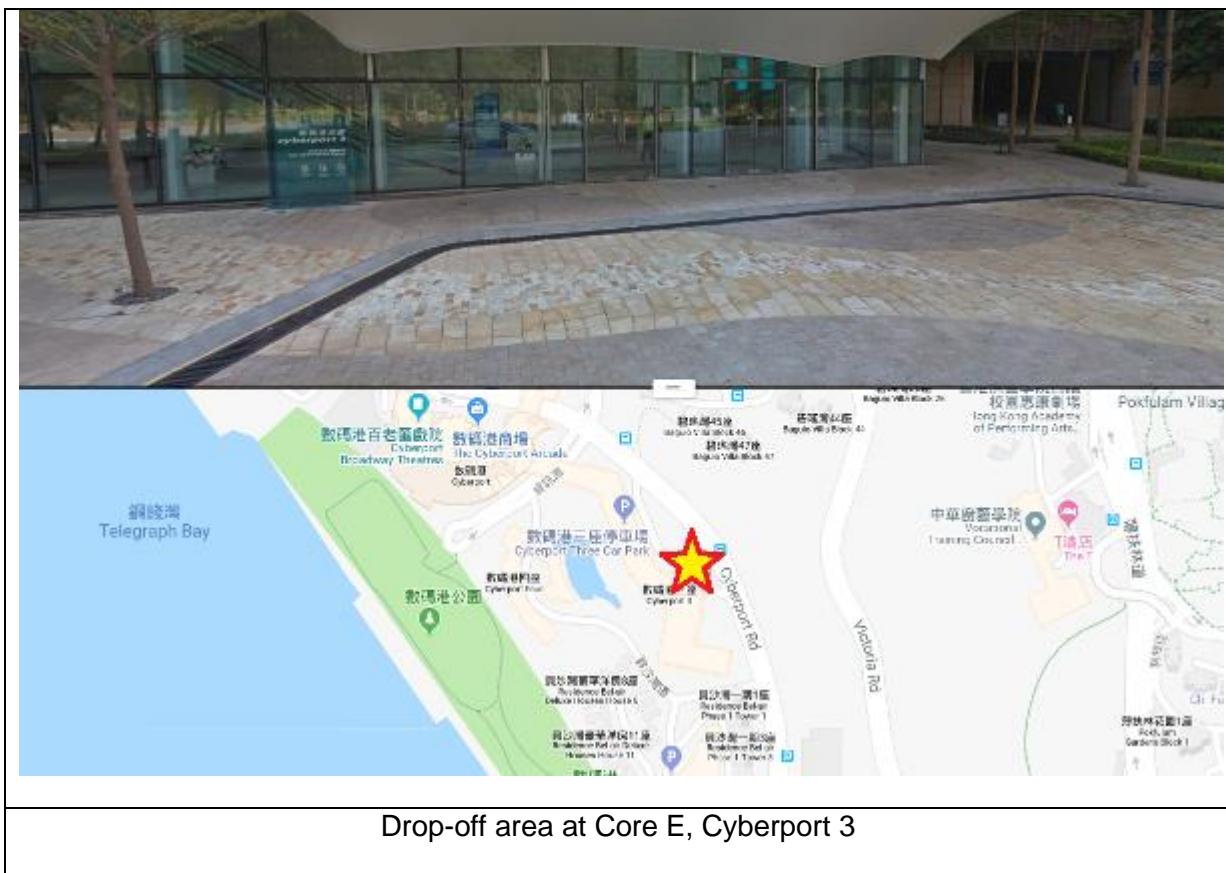
Tai Wai → Cyberport (The Annex → Cyberport 3)



Public Transport Interchange, Tai Wai - 08:05 / 08:15 / 08:25 / 08:40



The Annex (Outside McDonald's Restaurant)



Drop-off area at Core E, Cyberport 3

Route 2B: Tai Wai – Evening Services 18:10 / 18:20 / 18:30 / 18:40

Cyberport (The Annex) → Tai Wai



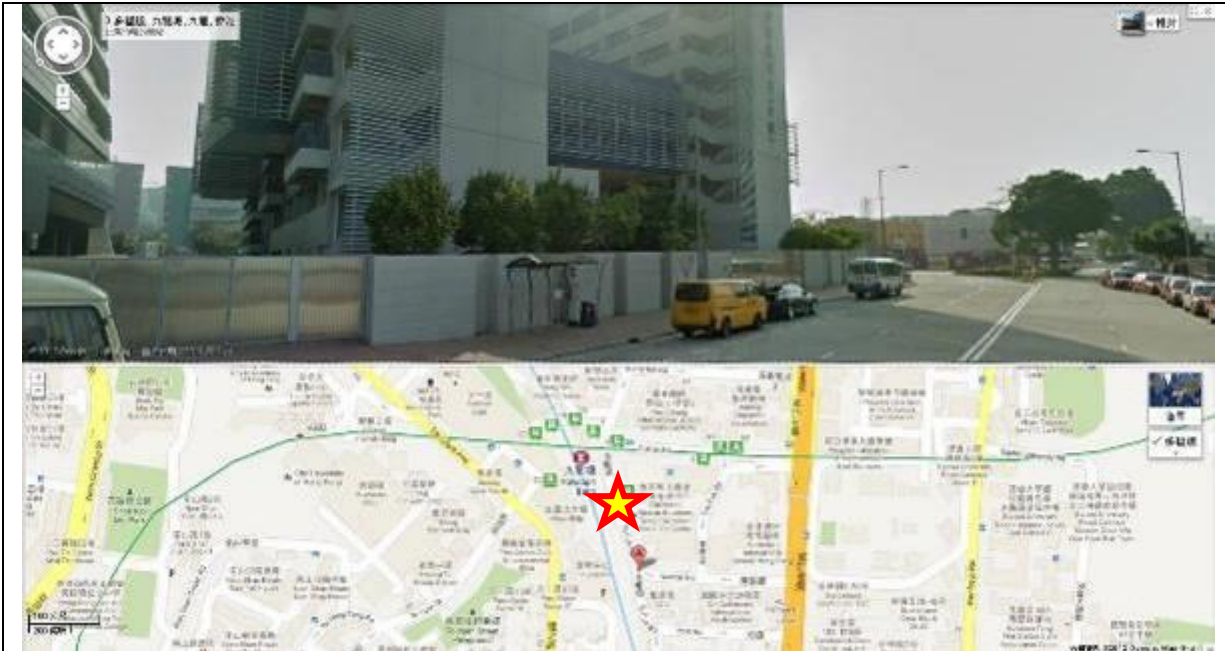
The Annex (Outside McDonald's Restaurant) - 18:10 / 18:20 / 18:30 / 18:40



Public Transport Interchange, Tai Wai

Route 3A: Kowloon Tong & Olympic – Morning Services 08:05 / 08:20 / 08:35

Kowloon → Olympic → Cyberport (The Annex → Cyberport 3)



To Fuk Road, Kowloon Tong (near Yew Chung International School) - 08:05 / 08:20 / 08:35



Chun Wing Street, Olympic - 08:20 / 08:35 / 08:50



The Annex (Outside McDonald's Restaurant)



Drop-off area at Core E, Cyberport 3

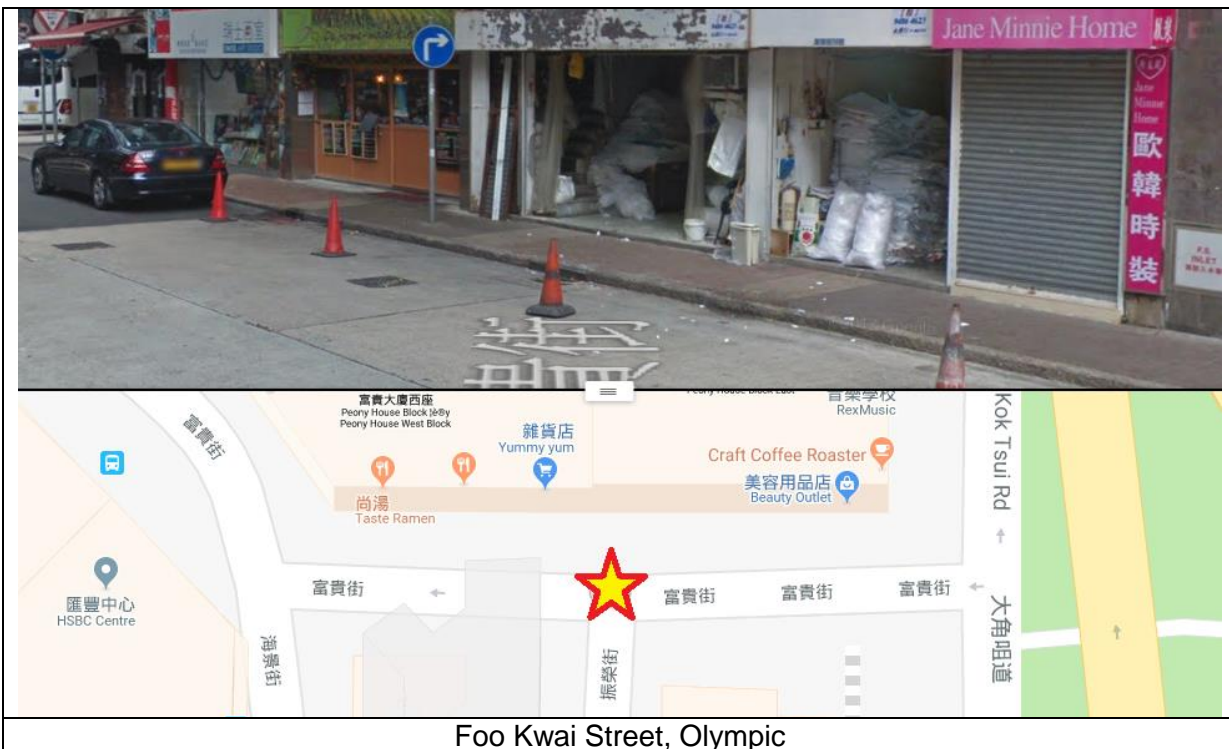
Cyberport Facilities Management Office:
Unit 401, L4, IT Street, Core A,
Cyberport 3, 100 Cyberport Road, Hong Kong
Tel: 3166-3111 Fax: 3166-3100 Email: facility@cyberport.hk

Route 3B: Kowloon Tong & Olympic – Evening Services 18:00 / 18:25 / 19:05

Cyberport (The Annex) → Olympic → Kowloon Tong



The Annex (Outside McDonald's Restaurant) - 18:00 / 18:25 / 19:05



Foo Kwai Street, Olympic

Cyberport Facilities Management Office:
 Unit 401, L4, IT Street, Core A,
 Cyberport 3, 100 Cyberport Road, Hong Kong
 Tel: 3166-3111 Fax: 3166-3100 Email: facility@cyberport.hk



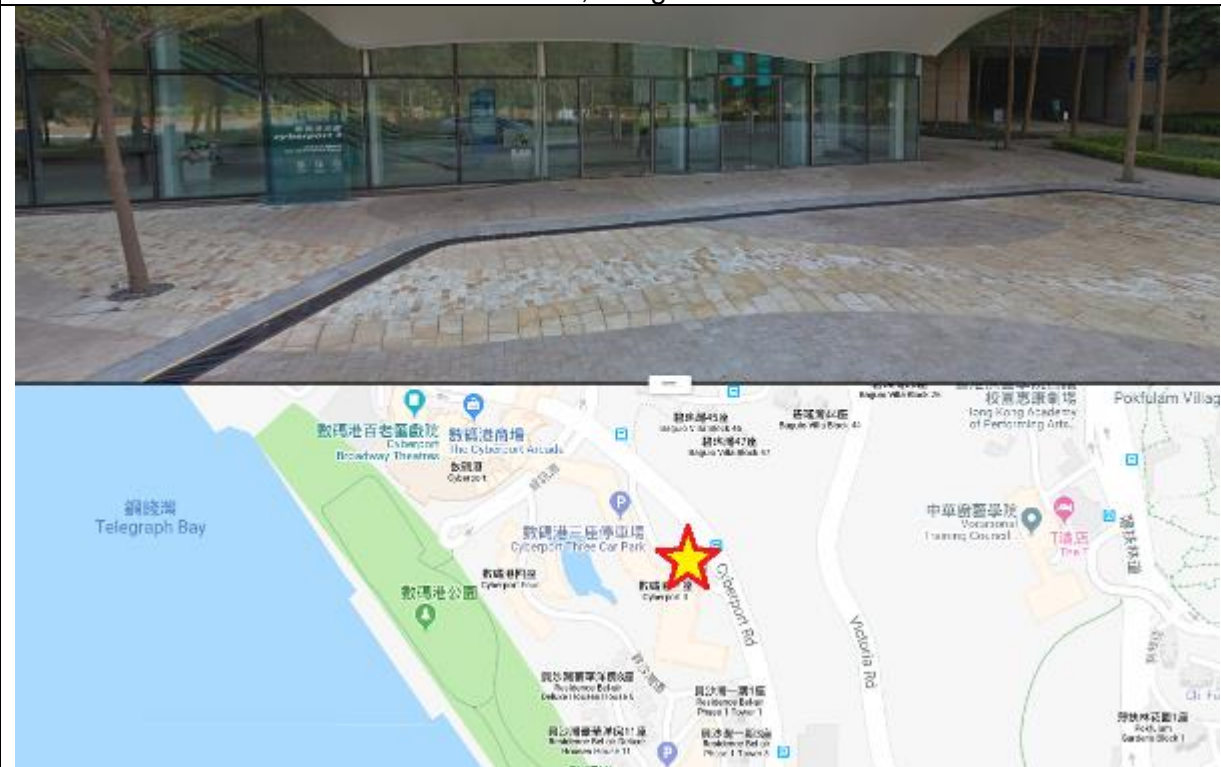
To Fuk Road, Kowloon Tong (near Yew Chung International School)

Route 4A: Hang Hau – Morning Services 07:55

Hang Hau → Cyberport (Cyberport 3 → Arcade)



Man Kuk Lane, Hang Hau – 07:55



Drop-off area at Core E, Cyberport 3

Cyberport Facilities Management Office:
 Unit 401, L4, IT Street, Core A,
 Cyberport 3, 100 Cyberport Road, Hong Kong
 Tel: 3166-3111 Fax: 3166-3100 Email: facility@cyberport.hk



The Arcade, Cyberport

Route 4B: Hang Hau – Evening Service 18:15

Cyberport (The Annex) → Hang Hau



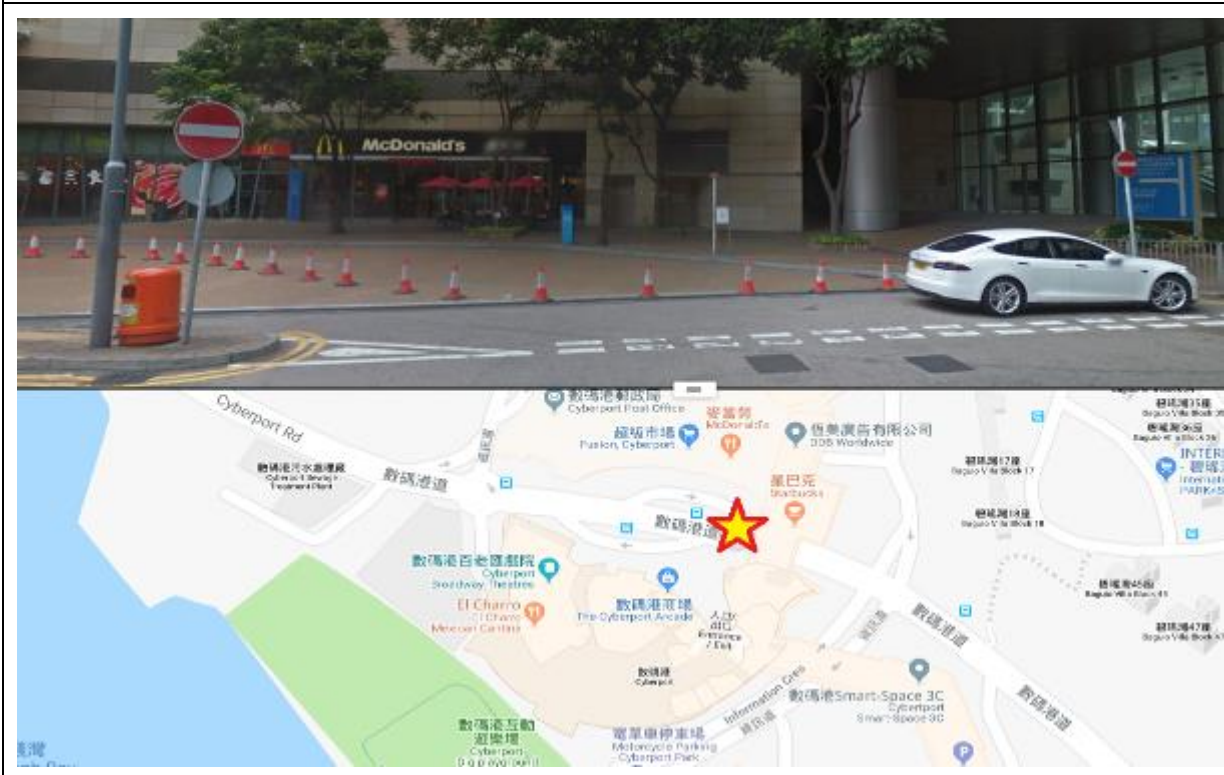
Cyberport Facilities Management Office:
Unit 401, L4, IT Street, Core A,
Cyberport 3, 100 Cyberport Road, Hong Kong
Tel: 3166-3111 Fax: 3166-3100 Email: facility@cyberport.hk

Route 5A: Lam Tin – Morning Services 08:15

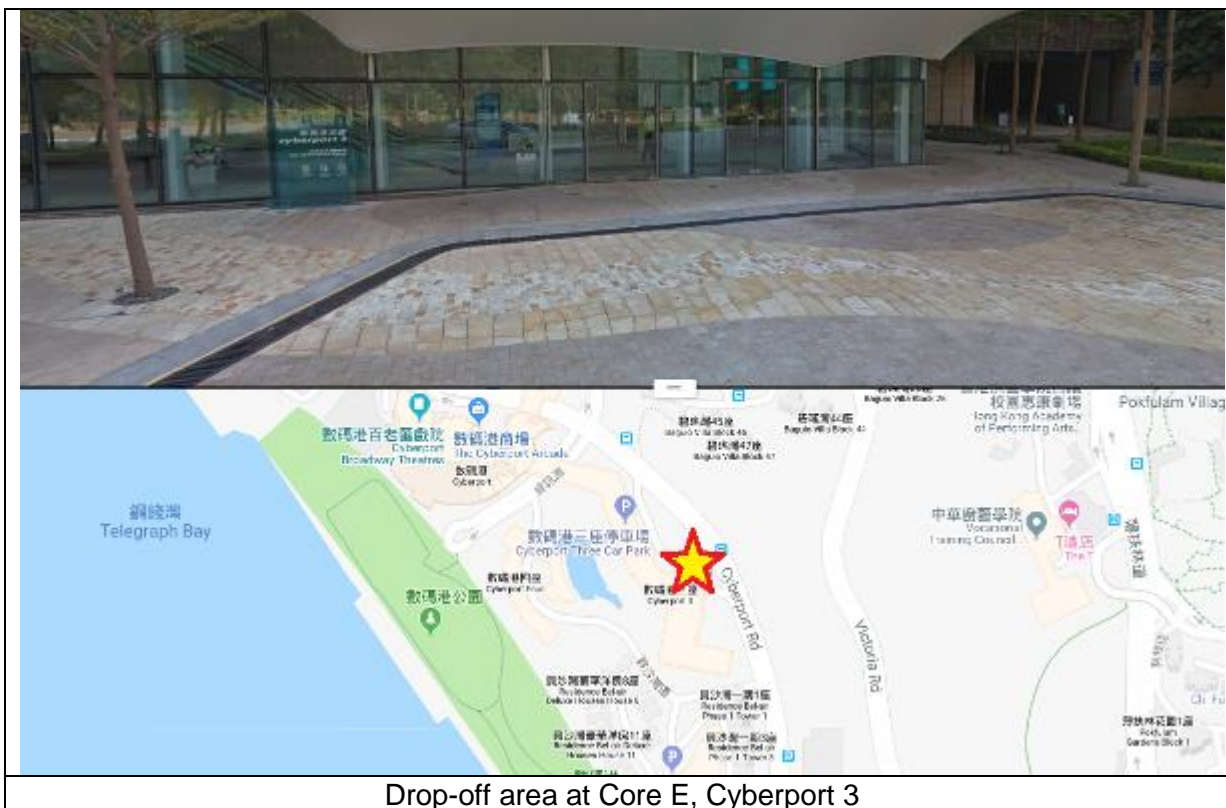
Lam Tin → Cyberport (The Annex → Cyberport 3)



Public Transport Interchange, Lam Tin – 08:15



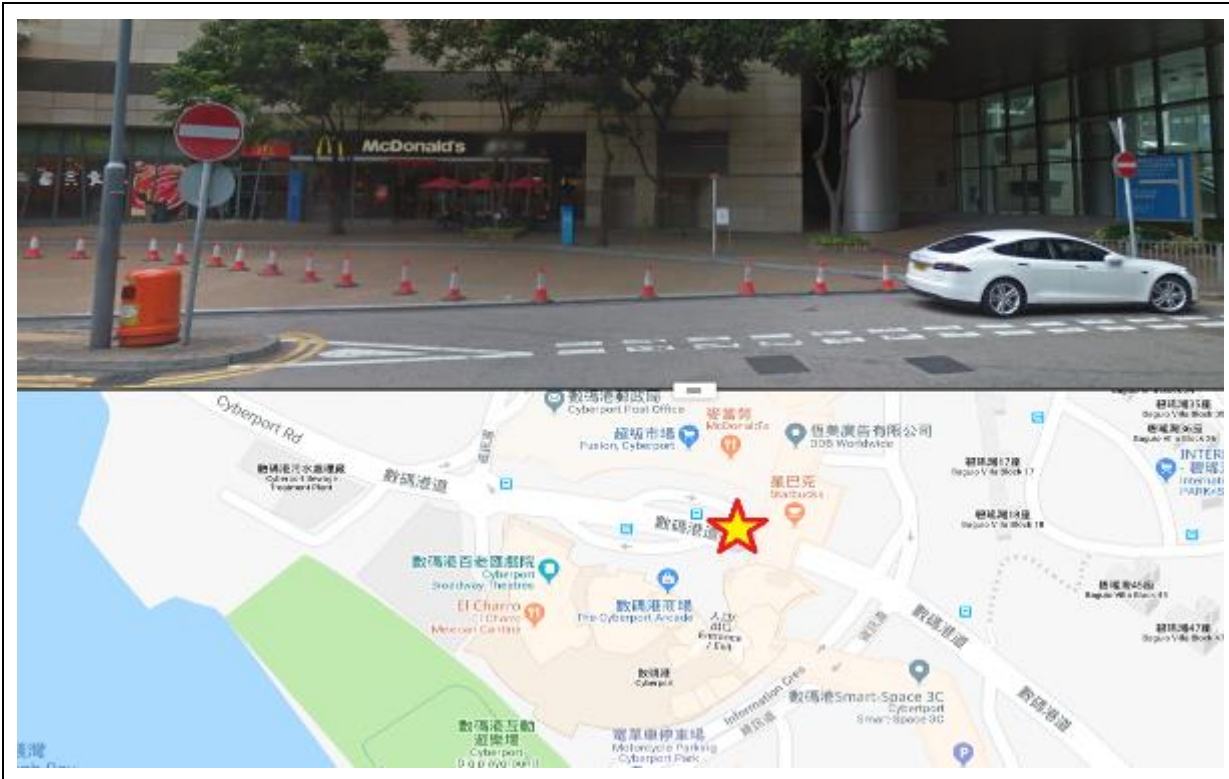
The Annex, Cyberport (Outside McDonald's Restaurant)



Drop-off area at Core E, Cyberport 3

Route 5B: Lam Tin – Evening Service 18:10

Cyberport (The Annex) → Lam Tin



The Annex, Cyberport (Outside McDonald's Restaurant) – 18:10



Public Transport Interchange, Lam Tin

Route 6A: Sheung Wan, Sai Wan & Kennedy Town – Morning Services 08:15 / 08:30 / 08:45

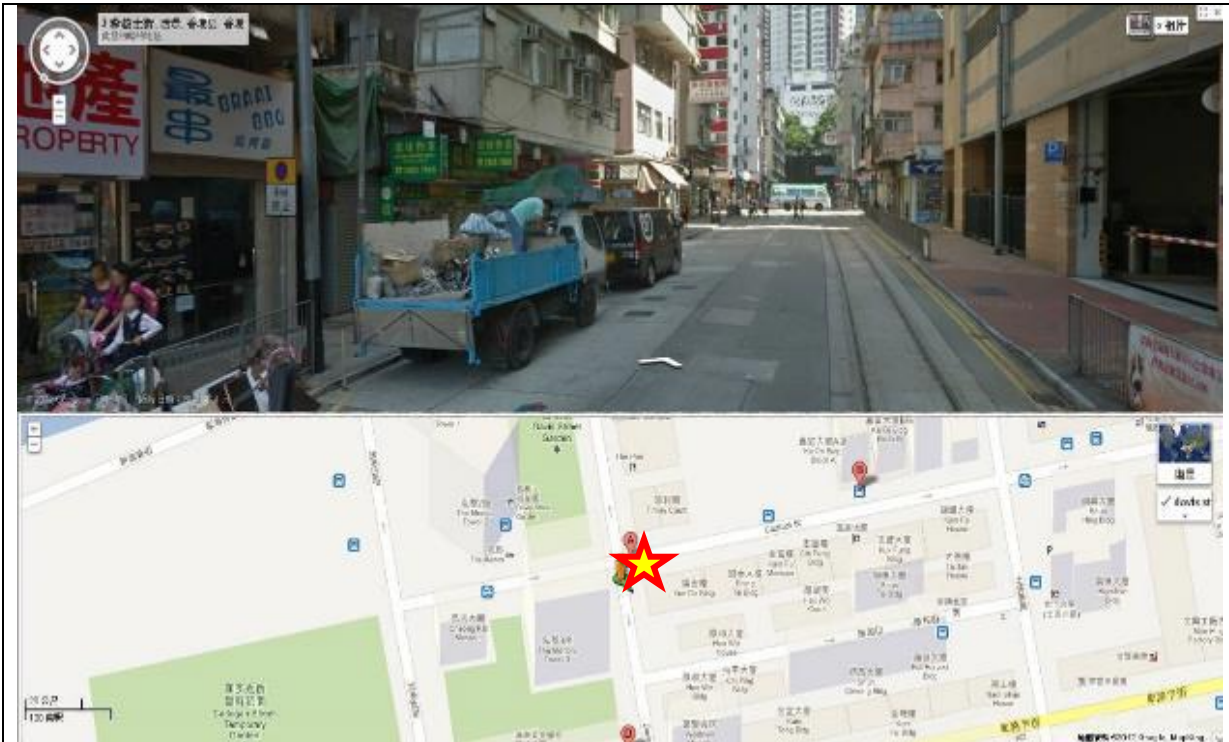
Sheung Wan → Sai Wan → Kennedy Town → Cyberport (The Annex → Cyberport 3)



Wing On Centre, Connaught Road Central, Sheung Wan - 08:15 / 08:30 / 08:45



Connaught Garden, Connaught Road West, Sai Wan - 08:20 / 08:35 / 08:50

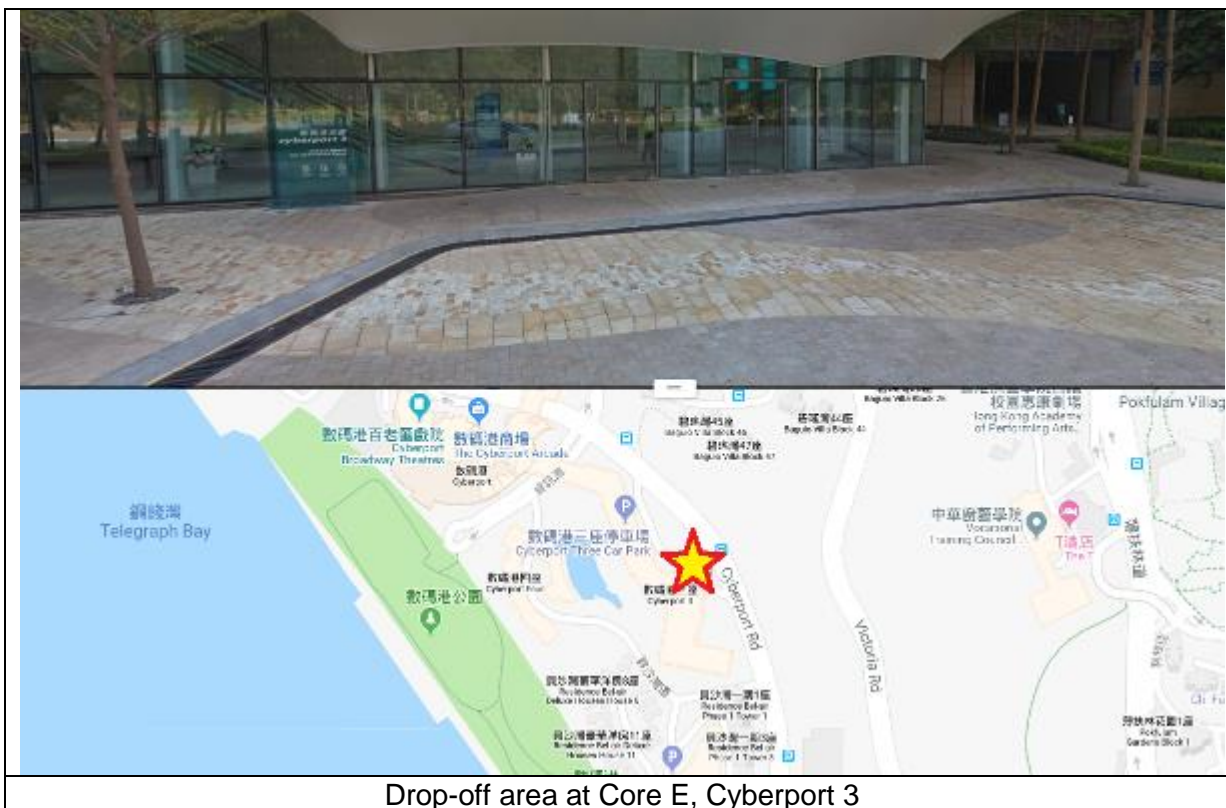


Davis Street, Kennedy Town - 08:30 / 08:45 / 09:00



The Annex, Cyberport (Outside McDonald's Restaurant)

Cyberport Facilities Management Office:
Unit 401, L4, IT Street, Core A,
Cyberport 3, 100 Cyberport Road, Hong Kong
Tel: 3166-3111 Fax: 3166-3100 Email: facility@cyberport.hk



Drop-off area at Core E, Cyberport 3

Route 6B: Sheung Wan, Sai Wan & Kennedy Town – Evening Services 18:10 / 18:25 / 18:45

Cyberport (The Arcade) → Kennedy Town → Sheung Wan → Sai Wan



The Arcade, Cyberport - 18:10 / 18:25 / 18:45



Catchick Street, Kennedy Town

Cyberport Facilities Management Office:
 Unit 401, L4, IT Street, Core A,
 Cyberport 3, 100 Cyberport Road, Hong Kong
 Tel: 3166-3111 Fax: 3166-3100 Email: facility@cyberport.hk



Wing On Centre, Connaught Road Central, Sheung Wan



Connaught Garden, Connaught Road West, Sai Wan

Terms and Conditions

1. The bus service will be cancelled if Black Rainstorm Warning Signal/Typhoon Signal No. 8 or above hoisted in an hour or less before the departures.
2. Passengers should arrive at the boarding point 5 minutes before the departure time.
3. The ticket can be used interchangeably with other Cyberport Tenant Bus coupons of different values. No change will be available for value differences.
4. The Carrier will not accept any liability whatsoever except those taken up by vehicle's insurer in accordance with the terms and conditions written on the Certificate of Insurance issued to the vehicles as required by the Hong Kong Motor Vehicles Insurance (third Party Risks) Ordinance.
5. The ticket is non-refundable and non-exchangeable. / After confirmation of the TNG Wallet for the Cyberport tenant bus, no refund will be arranged.
6. In case of disputes, Hong Kong Cyberport Management Company Ltd and its appointed facilities management service provider reserves the right of final decision.
7. **The TNG payment record of each tenant bus trip journey is only valid within 30 minutes prior to bus departure**
8. **Only 1 bus pass purchase is allowed per TNG Wallet for each tenant bus trip**
9. Starting from 3rd April 2017 during the promotion period, passenger will get \$1 fare rebate for each tenant bus trip by using TNG Wallet.”
10. The TNG Top-Up service is available at all 7-11 convenience stores at Hong Kong.
11. In case of disputes, Hong Kong Cyberport Management Company Ltd and its appointed facilities management service provider reserves the right of final decision.