

## **Cyberport Tenant Bus Service (effective from 9<sup>th</sup> March 2026)**

### **Route 1: Sheung Wan Route Running Between Sheung Wan and Cyberport**

Morning trip : Sheung Wan (Wing On Centre) → Sai Wan (Connaught Garden) →  
Kennedy Town (Davis Street) → Cyberport (Annex → Cyberport 3)

Evening trip : Cyberport (Arcade) → Kennedy Town (Davis Street) →  
Sheung Wan (Wing On Centre) → Sai Wan (Connaught Garden)

Departure time

From Sheung Wan (Wing On Centre)	: 08:20	08:45
From Sai Wan (Connaught Garden)	: 08:25	08:50
From Kennedy Town (Davis Street)	: 08:35	09:00

From Cyberport	: 18:10	18:40
----------------	---------	-------

### **Route 2: Mei Foo Route Running Between Mei Foo and Cyberport (via Western Harbour Tunnel)**

Morning trip : Mei Foo (Mei Lai Road) → Cyberport (Annex → Cyberport 3)

Evening trip : Cyberport (Arcade) → Mei Foo (Mei Lai Road)

Departure time

From Mei Foo (Mei Lai Road)	: 08:00	08:15	08:25
-----------------------------	---------	-------	-------

From Cyberport	: 18:05	18:20	18:35
		18:50	

### **Route 3: Lam Tin Route Running Between Lam Tin and Cyberport (via Eastern Harbour Tunnel)**

Morning trip : Lam Tin (Sin Fat Road) → Cyberport (Cyberport 3 → Annex)

Evening trip : Cyberport (Annex) → Lam Tin (Sin Fat Road)

Departure time

From Lam Tin (Sin Fat Road)	: 08:00	08:20
-----------------------------	---------	-------

From Cyberport	: 18:10	18:20
----------------	---------	-------

**Route 4: Hang Hau Route**  
**Running Between Hang Hau and Cyberport** (via Eastern Harbour Tunnel)

Morning trip : Hang Hau (Man Kuk Lane) → Cyberport (Cyberport 3 → Annex)

Evening trip : Cyberport (Annex) → Hang Hau (Man Kuk Lane)

Departure time

From Hang Hau (Man Kuk Lane) : 07:55

From Cyberport : 18:15

**Route 5: Kowloon Tong Route**  
**Running Between Kowloon Tong and Cyberport** (via Western Harbour Tunnel)

Morning trip : Kowloon Tong (To Fuk Road) → Olympic (Hoi Fan Road) →  
Cyberport (Annex → Cyberport 3)

Evening trip : Cyberport (Annex) → Olympic (Hoi Fan Road) →  
Kowloon Tong (To Fuk Road)

Departure time

From Kowloon Tong (To Fuk Road) : 08:00 08:15 08:35

From Olympic (Hoi Fan Road) : 08:20 08:35 08:50

From Cyberport : 18:05 18:55

**Route 6: Tai Wai Route**  
**Running Between Tai Wai and Cyberport** (via Western Harbour Tunnel)

Morning trip : Tai Wai (Chik Wan Street) → Cyberport (Annex → Cyberport 3)

Evening trip : Cyberport (Annex) → Tai Wai (Chik Wan Street)

Departure time

From Tai Wai (Chik Wan Street) : 08:05 08:20 08:35 08:45

From Cyberport : 18:10 18:15 18:30 19:00

**Route 7: Central Route**  
**Running Between Central and Cyberport**

Morning trip : Central (Connaught Place, Jardine House) → Kennedy Town (Sands Street) → Cyberport 2 → Cyberport 3  
Evening trip : Cyberport 2 → Kennedy Town (Davis Street) → Central (Man Kwong Street) → Hong Kong Station (Man Cheung Street)

Departure time

From Central (Connaught Place, Jardine House) : 08:30  
From Kennedy Town (Sands Street) : 08:45  
From Cyberport 2 : 18:00 19:00 19:45

**Route 8: Causeway Bay Route**  
**Running Between Causeway Bay and Cyberport** (via Aberdeen Tunnel)

Morning trip : Causeway Bay (Sunning Road) → Cyberport 2 → Cyberport 3  
Evening trip : Cyberport 2 → Aberdeen (Aberdeen Praya Road) → Causeway Bay (Sunning Road)

Departure time

From Causeway Bay (Sunning Road) : 08:35  
From Cyberport : 18:30

**Route 9: Mong Kok Route**  
**Running Between Mong Kok and Cyberport** (via Western Harbour Tunnel)

Morning trip : Mong Kok (Yim Po Fong Street) → Mong Kok (Sai Yeung Choi Street South) → Olympic (Cherry Street) → Cyberport 2 → Cyberport 3  
Evening trip : Cyberport 2 → Olympic (Pok Man Street) → Yau Ma Tei (City View Hotel) → Mong Kok (Yim Po Fong Street) → Mong Kok East (Argyle Street)

Departure time

From Mong Kok (Yim Po Fong Street) : 08:20  
From Mong Kok (Sai Yeung Choi Street South) : 08:25  
From Olympic (Cherry Street) : 08:30  
From Cyberport 2 : 17:45 18:20

**Route 10: Yau Tong Route**  
**Running Between Yau Tong and Cyberport** (via Eastern Harbour Tunnel)

Morning trip : Yau Tong (Cha Kwo Ling Road) → Tai Koo (Kornhill Road) →  
Cyberport 2 → Cyberport 3  
Evening trip : Cyberport 2 → Tai Koo (Kornhill Road) →  
Yau Tong (Cha Kwo Ling Road)

Departure time

From Yau Tong (Cha Kwo Ling Road) : 08:10 08:15

From Tai Koo (Kornhill Road) : 08:30 08:35

From Cyberport 2 : 17:45 18:15

**Route 11: Yuen Long Route**  
**Running Between Yuen Long and Cyberport** (via Western Harbour Tunnel)

Morning trip : Yuen Long (Wang Lok Street) → Tuen Mun (Heung Sze Wui Road) →  
Tsuen Wan (Tai Ho Road North Southbound bus stop) → Annex → Cyberport 3  
Evening trip : Cyberport 3 → Tsuen Wan (Tai Ho Road North Southbound bus stop) →  
Tuen Mun (Heung Sze Wui Road) → Yuen Long (Wang Lok Street)

Departure time

From Yuen Long (Wang Lok Street) : 07:20

From Tuen Mun (Heung Sze Wui Road) : 07:50

Tsuen Wan (Tai Ho Road North Southbound bus stop) : 08:10

From Cyberport 3 : 18:15

All routes will be running from Mondays to Fridays only (except Saturdays, Sundays and public holidays). Boarding and alighting points are indicated on the attached maps.

### Payment Method

Passengers can register their Octopus card(s) for Cyberport tenant bus service by submitting the Octopus Registration Form to our Facilities Management Office.

### Fare

<b>Route 1</b>	<b>: Cyberport ⇄ Kennedy Town ⇄ Sheung Wan ⇄ Sai Wan</b>	<b>HK\$11</b>
<b>Route 2</b>	<b>: Cyberport ⇄ Mei Foo</b> (via Western Harbour Tunnel)	<b>HK\$24</b>
<b>Route 3</b>	<b>: Cyberport ⇄ Lam Tin</b> (via Eastern Harbour Tunnel)	<b>HK\$22</b>
<b>Route 4</b>	<b>: Cyberport ⇄ Hang Hau</b> (via Eastern Harbour Tunnel)	<b>HK\$24</b>
<b>Route 5</b>	<b>: Cyberport ⇄ Olympic ⇄ Kowloon Tong</b> : (via Western Harbour Tunnel)	<b>HK\$24</b>
<b>Route 6</b>	<b>: Cyberport ⇄ Tai Wai</b> (via Western Harbour Tunnel)	<b>HK\$27</b>
<b>Route 7</b>	<b>: Cyberport ⇄ Kennedy Town ⇄ Central/ Hong Kong Station</b>	<b>HK\$11 / HK\$17.5</b>
<b>Route 8</b>	<b>: Cyberport ⇄ Causeway Bay</b> (via Aberdeen Tunnel)	<b>HK\$17.5</b>
<b>Route 9</b>	<b>: Cyberport ⇄ Mong Kok</b> (via Western Harbour Tunnel)	<b>HK\$24</b>
<b>Route 10</b>	<b>: Cyberport ⇄ Tai Koo ⇄ Yau Tong</b> : (via Eastern Harbour Tunnel)	<b>HK\$22 / HK\$26</b>
<b>Route 11</b>	<b>: Cyberport ⇄ Tsuen Wan ⇄ Tuen Mun ⇄ Yuen Long</b> (via Western Harbour Tunnel)	<b>HK\$35 / HK\$42 / HK\$44</b>

**Octopus Payment**

Passenger can use their registered Octopus card for payment of Cyberport Tenant Bus Services. Octopus Payment at Cyberport Tenant Bus Services are also eligible as a part of the Public Transport Fare Subsidy Scheme (PTFSS).

Passengers can register their Octopus card(s) for Cyberport tenant bus service by submitting the Octopus Registration Form to our Facilities Management Office.

Please be reminded that as the regulation from Transport Department, only employees of registered Cyberport Company are eligible to register their Octopus card for Cyberport Tenant Bus Services, with the Annex C form signed by company's representative and submitted to our Facilities Management Office 3 days in advance of the first ride. If you are not sure whether your company is registered, please contact your administration staff for your company or our Customer Service Department for enquiry.

For details & collection of Octopus Registration Form & Annex C Form, you may download the related document from QR Codes below, or you may contact our Customer Services Department at 3166 3111 or by email via [cs@cyberport.com.hk](mailto:cs@cyberport.com.hk).



**PTFSS**



**Octopus Registration & Annex C Form**

**Pick-up & Drop-Off Locations**

**Route 1A: Sheung Wan Route – Morning Services 08:20 / 08:45**

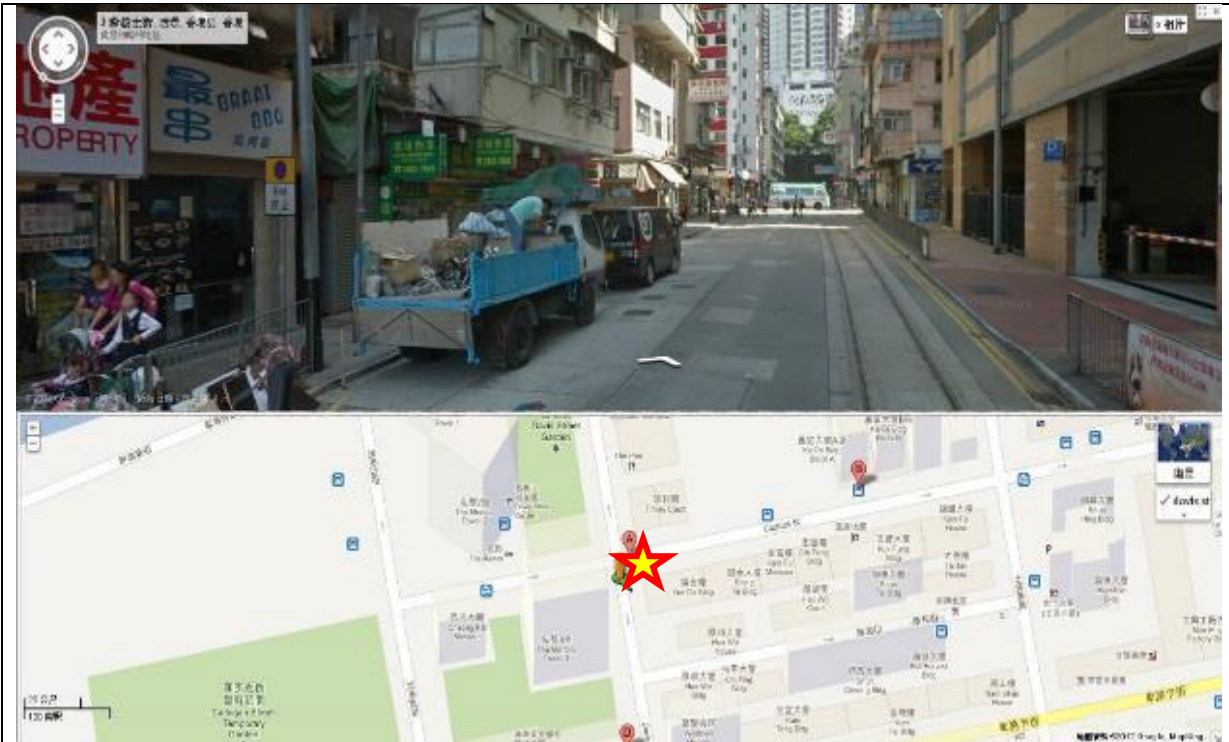
Sheung Wan (Wing On Centre, Connaught Road Central) →  
Sai Wan (Connaught Garden, Connaught Road West) →  
Kennedy Town (Davis Street) → Cyberport (Annex → Cyberport 3)



Wing On Centre, Connaught Road Central, Sheung Wan



Connaught Garden, Connaught Road West, Sai Wan

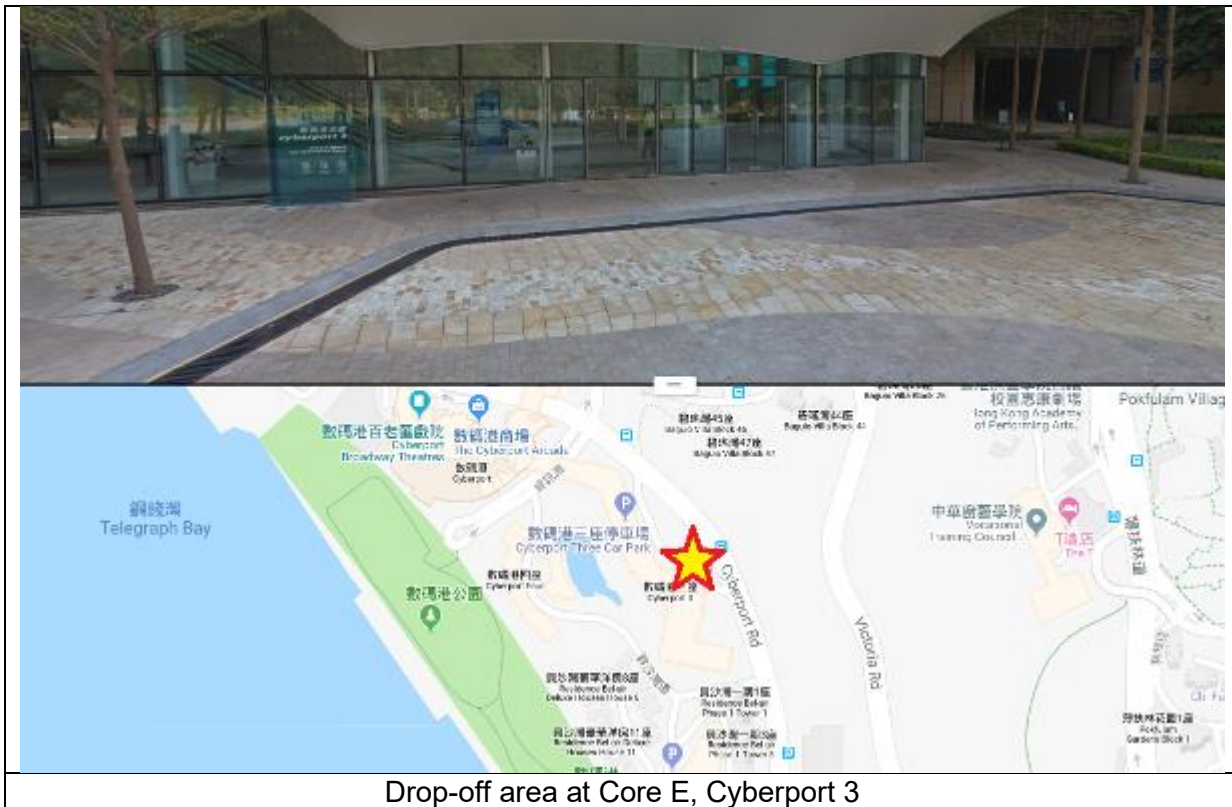


Davis Street, Kennedy Town



The Annex, Cyberport (Outside McDonald's Restaurant)

Cyberport Facilities Management Office:  
Unit 404, L4, IT Street, Core A,  
Cyberport 3, 100 Cyberport Road, Hong Kong  
Tel: 3166-3111 Email: [cs@cyberport.com.hk](mailto:cs@cyberport.com.hk)



Drop-off area at Core E, Cyberport 3

**Route 1B: Sheung Wan – Evening Services 18:10 / 18:40**

Cyberport (Arcade) → Kennedy Town (Davis Street) → Sheung Wan (Wing On Centre, Connaught Road Central) → Sai Wan (Connaught Garden, Connaught Road West)



The Arcade, Cyberport



Davis Street, Kennedy Town

Cyberport Facilities Management Office:  
Unit 404, L4, IT Street, Core A,  
Cyberport 3, 100 Cyberport Road, Hong Kong  
Tel: 3166-3111 Email: [cs@cyberport.com.hk](mailto:cs@cyberport.com.hk)



Wing On Centre, Connaught Road Central, Sheung Wan



Connaught Garden, Connaught Road West, Sai Wan

**Route 2A: Mei Foo Route – Morning Services 08:00 / 08:15 / 08:25**

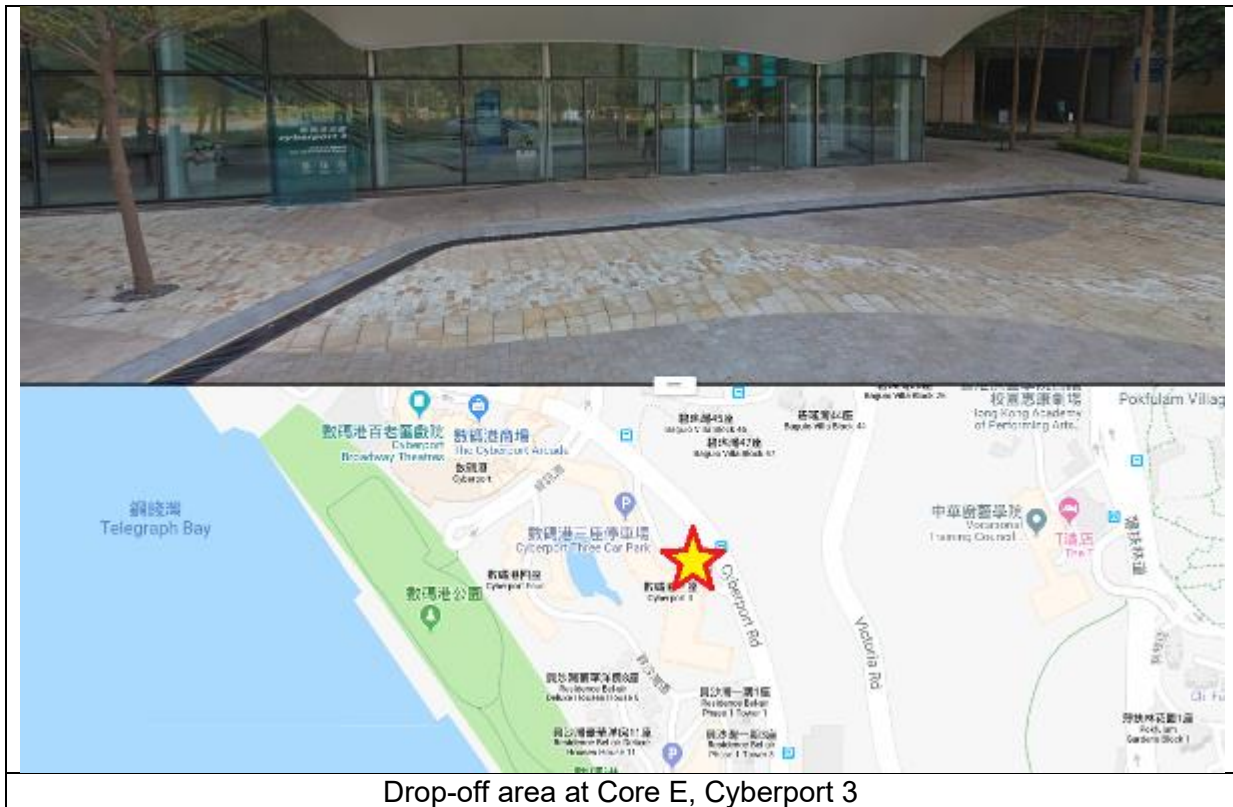
Mei Foo (Mei Lai Road) → Cyberport (Annex → Cyberport 3)



Mei Lai Road, Mei Foo

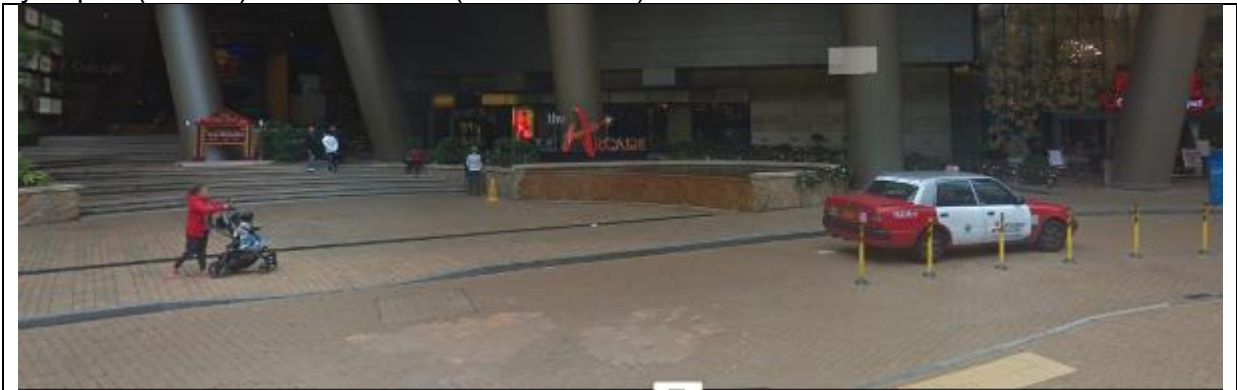


The Annex, Cyberport (Outside McDonald's Restaurant)



**Route 2B: Mei Foo Route – Evening Services 18:05 / 18:20 / 18:35 / 18:50**

Cyberport (Arcade) → Mei Foo (Mei Lai Road)



The Arcade, Cyberport



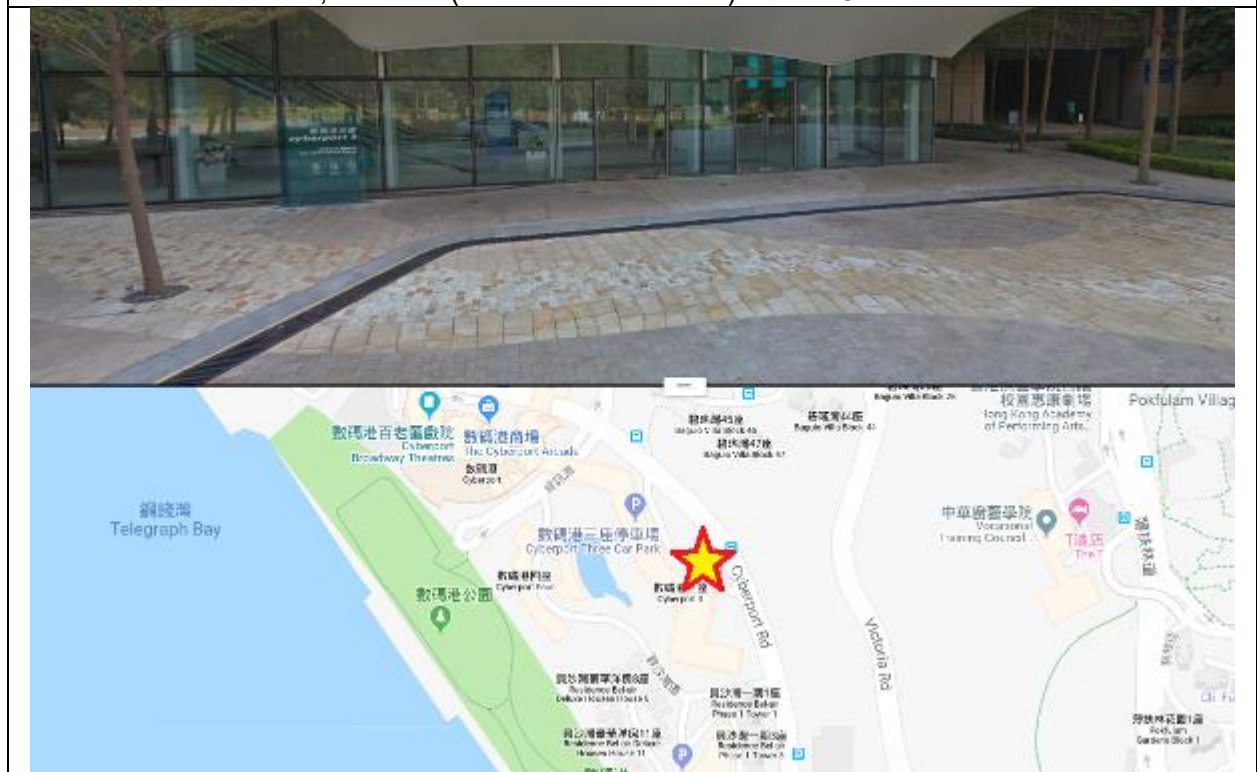
Mei Lai Road, Mei Foo

### Route 3A: Lam Tin Route – Morning Services 08:00 / 08:20

Lam Tin (Sin Fat Road) → Cyberport (Cyberport 3 → Annex)



Sin Fat Road, Lam Tin (Next to MTR Exit D1) – near Chelsea Soccer Pitch



Drop-off area at Core E, Cyberport 3



The Annex, Cyberport (Outside McDonald's Restaurant)

### Route 3B: Lam Tin Route – Evening Services 18:10 / 18:20

Cyberport (Annex) → Lam Tin (Sin Fat Road)



The Annex, Cyberport (Outside McDonald's Restaurant)



Sin Fat Road, Lam Tin (Next to MTR Exit D1) – near Chelsea Soccer Pitch

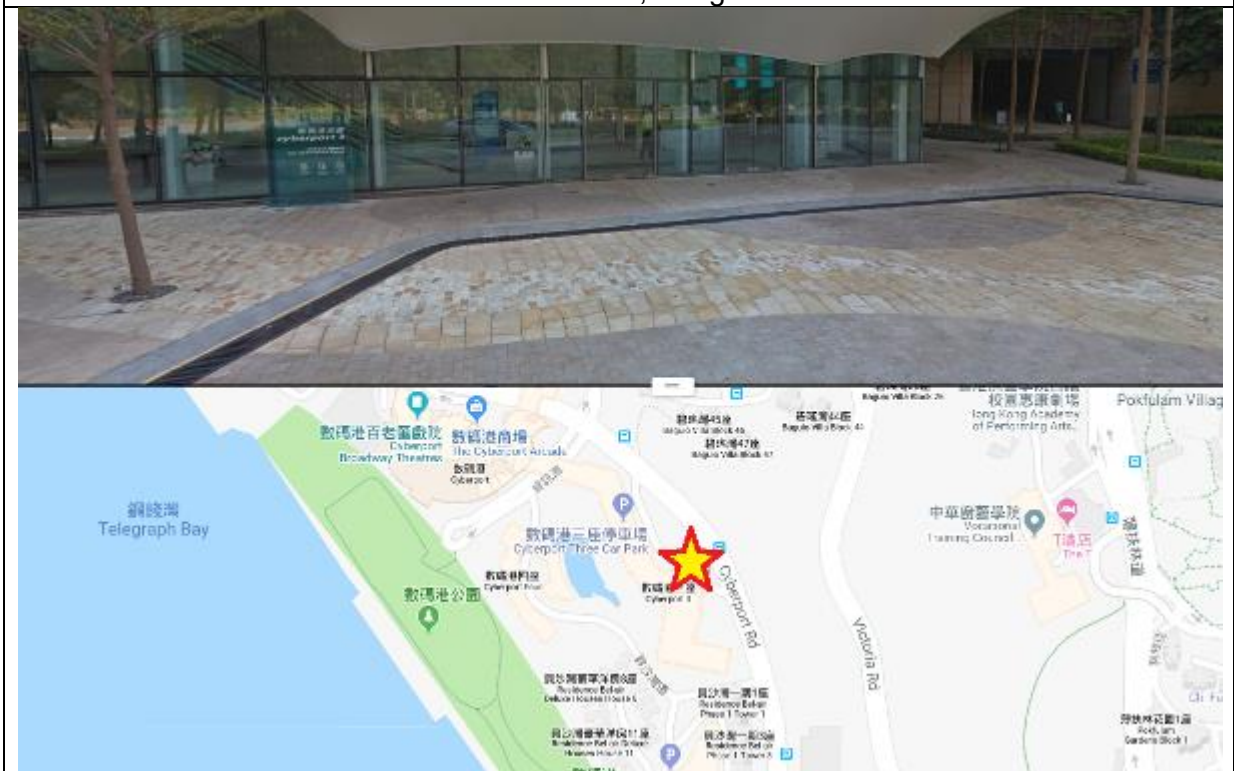
Cyberport Facilities Management Office:  
Unit 404, L4, IT Street, Core A,  
Cyberport 3, 100 Cyberport Road, Hong Kong  
Tel: 3166-3111 Email: [cs@cyberport.com.hk](mailto:cs@cyberport.com.hk)

### Route 4A: Hang Hau Route – Morning Services 07:55

Hang Hau (Man Kuk Lane) → Cyberport (Cyberport 3 → Annex)



Man Kuk Lane, Hang Hau



Drop-off area at Core E, Cyberport 3

Cyberport Facilities Management Office:  
Unit 404, L4, IT Street, Core A,  
Cyberport 3, 100 Cyberport Road, Hong Kong  
Tel: 3166-3111 Email: [cs@cyberport.com.hk](mailto:cs@cyberport.com.hk)



The Annex, Cyberport (Outside McDonald's Restaurant)

### Route 4B: Hang Hau Route – Evening Services 18:15

Cyberport (Annex) → Hang Hau (Man Kuk Lane)



The Annex, Cyberport (Outside McDonald's Restaurant)



Man Kuk Lane, Hang Hau

Cyberport Facilities Management Office:  
Unit 404, L4, IT Street, Core A,  
Cyberport 3, 100 Cyberport Road, Hong Kong  
Tel: 3166-3111 Email: [cs@cyberport.com.hk](mailto:cs@cyberport.com.hk)

**Route 5A: Kowloon Tong Route – Morning Services 08:00 / 08:15 / 08:35**

Kowloon Tong (To Fuk Road) → Olympic (Hoi Fan Road) → Cyberport (Annex → Cyberport 3)



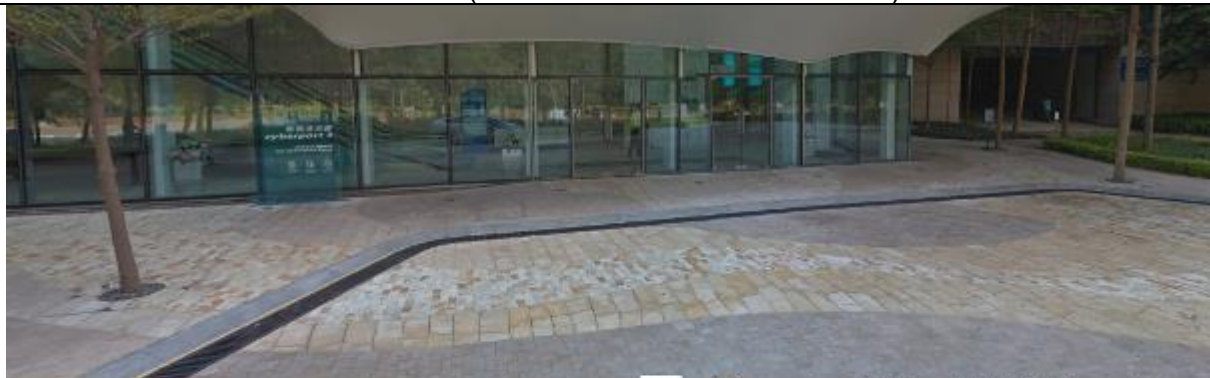
To Fuk Road, Kowloon Tong (near Yew Chung International School)



Hoi Fan Road, Olympic



The Annex (Outside McDonald's Restaurant)



Drop-off area at Core E, Cyberport 3

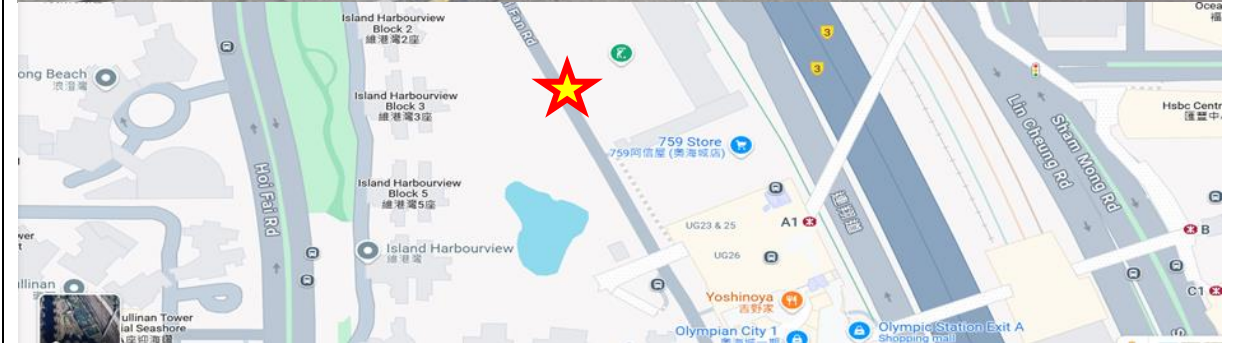
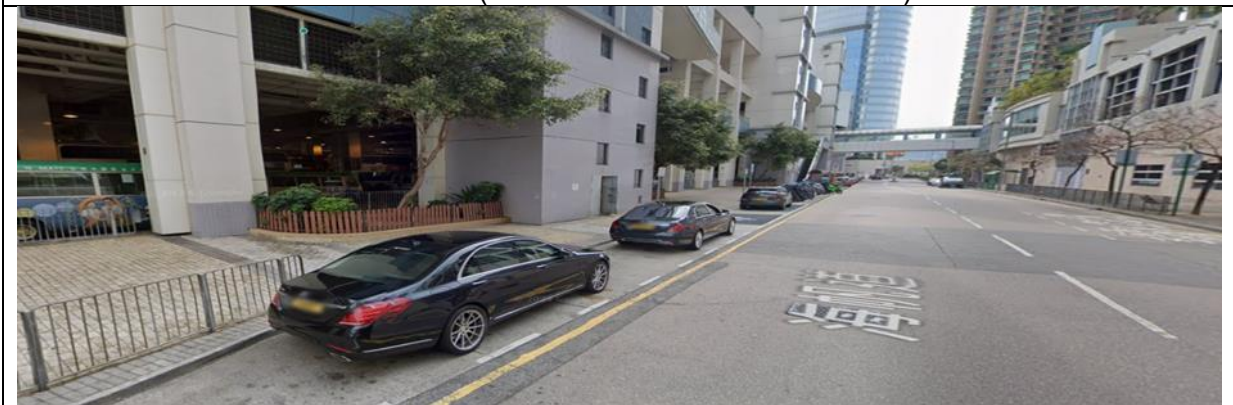
Cyberport Facilities Management Office:  
Unit 404, L4, IT Street, Core A,  
Cyberport 3, 100 Cyberport Road, Hong Kong  
Tel: 3166-3111 Email: [cs@cyberport.com.hk](mailto:cs@cyberport.com.hk)

**Route 5B: Kowloon Tong Route – Evening Services 18:05 / 18:55**

Cyberport (Annex) → Olympic (Hoi Fan Road) → Kowloon Tong (To Fuk Road)



The Annex (Outside McDonald's Restaurant)



Hoi Fan Road, Olympic

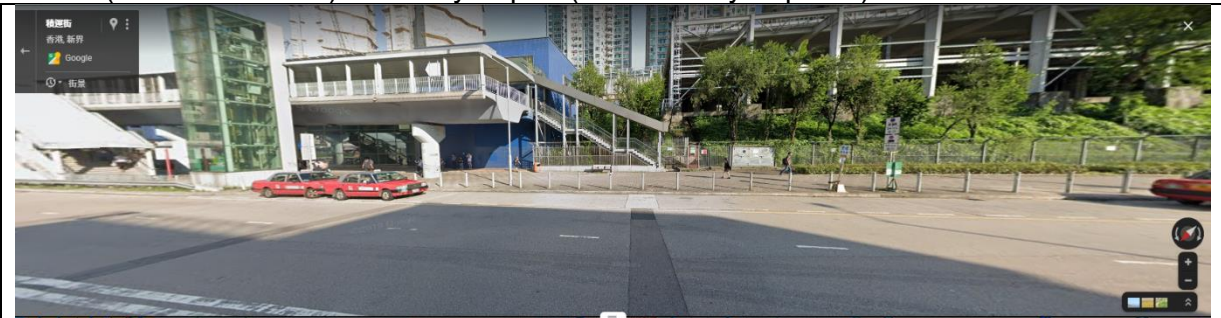
Cyberport Facilities Management Office:  
Unit 404, L4, IT Street, Core A,  
Cyberport 3, 100 Cyberport Road, Hong Kong  
Tel: 3166-3111 Email: [cs@cyberport.com.hk](mailto:cs@cyberport.com.hk)



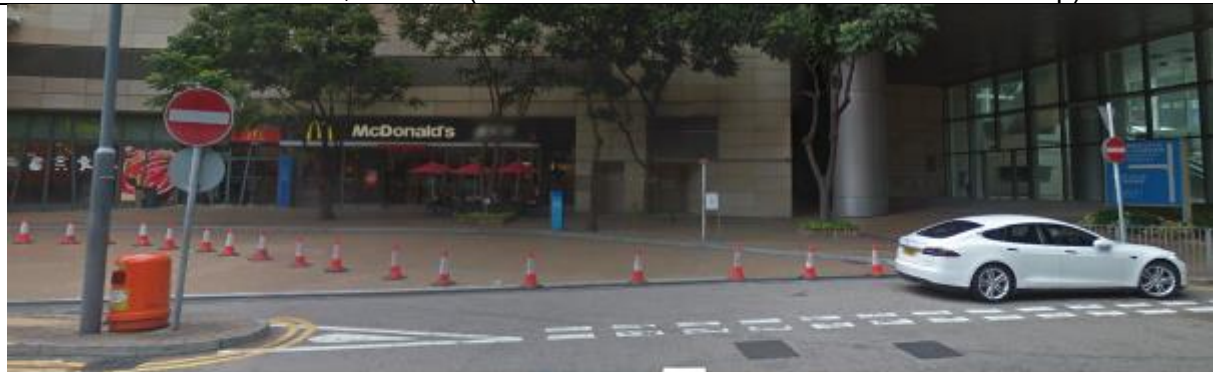
To Fuk Road, Kowloon Tong (near Yew Chung International School)

**Route 6A: Tai Wai Route – Morning Services 08:05 / 08:20 / 08:35 / 08:45**

Tai Wai (Chik Wan Street) → Cyberport (Annex → Cyberport 3)



Chik Wan Street, Tai Wai (Near Po Fook Memorial Hall Shuttle Bus Stop)



The Annex (Outside McDonald's Restaurant)

Cyberport Facilities Management Office:  
Unit 404, L4, IT Street, Core A,  
Cyberport 3, 100 Cyberport Road, Hong Kong  
Tel: 3166-3111 Email: [cs@cyberport.com.hk](mailto:cs@cyberport.com.hk)

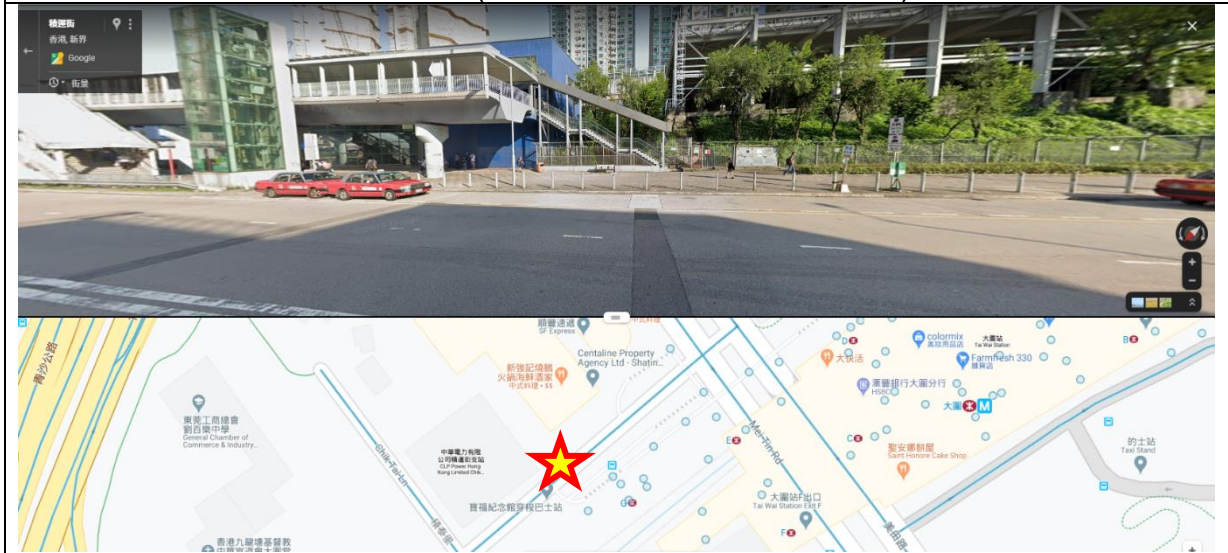


**Route 6B: Tai Wai Route – Evening Services 18:10 / 18:15 / 18:30 / 19:00**

Cyberport (Annex) → Tai Wai (Chik Wan Street)



The Annex (Outside McDonald's Restaurant)

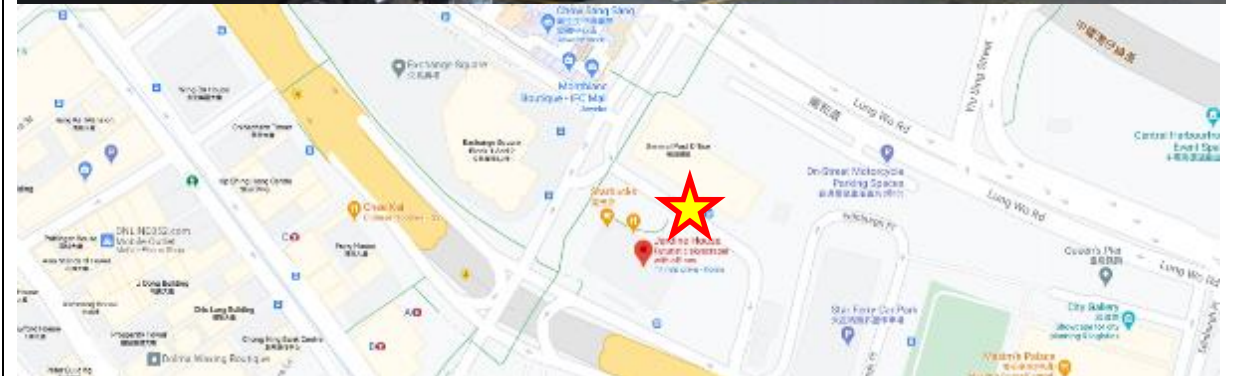


Chik Wan Street, Tai Wai (Near Po Fook Memorial Hall Shuttle Bus Stop)

Cyberport Facilities Management Office:  
Unit 404, L4, IT Street, Core A,  
Cyberport 3, 100 Cyberport Road, Hong Kong  
Tel: 3166-3111 Email: [cs@cyberport.com.hk](mailto:cs@cyberport.com.hk)

### Route 7A: Central Route – Morning Services 08:30

Central (Connaught Place, Jardine House) → Kennedy Town (Sands Street) → Cyberport 2 → Cyberport 3



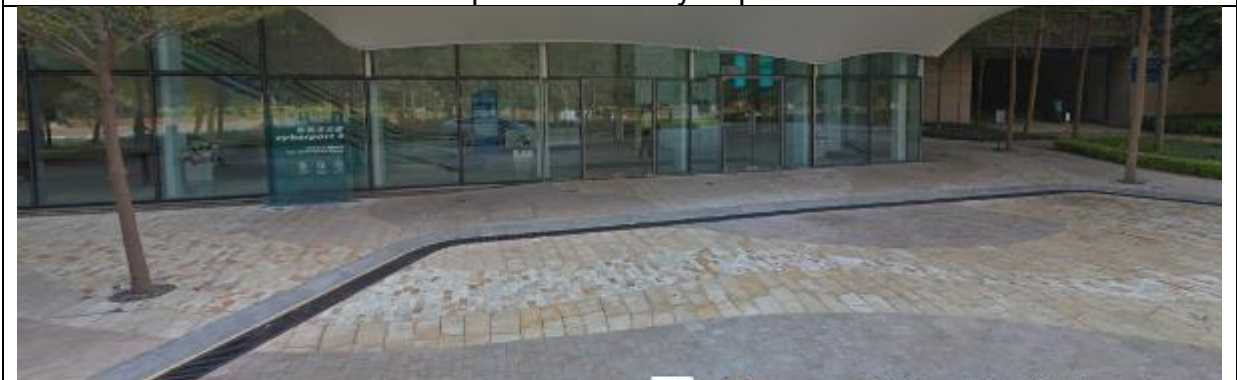
Central (Connaught Place, Jardine House)



Kennedy Town (Sands Street)



Drop-off area at Cyberport 2



Drop-off area at Cyberport 3

Cyberport Facilities Management Office:  
Unit 404, L4, IT Street, Core A,  
Cyberport 3, 100 Cyberport Road, Hong Kong  
Tel: 3166-3111 Email: [cs@cyberport.com.hk](mailto:cs@cyberport.com.hk)

**Route 7B: Central Route – Evening Services 18:00 / 19:00 / 19:45**

Cyberport 2 → Kennedy Town (Davis Street) → Central (Man Kwong Street)  
→ Hong Kong Station (Man Cheung Street)



Cyberport 2



Kennedy Town (Davis Street)

Cyberport Facilities Management Office:  
Unit 404, L4, IT Street, Core A,  
Cyberport 3, 100 Cyberport Road, Hong Kong  
Tel: 3166-3111 Email: [cs@cyberport.com.hk](mailto:cs@cyberport.com.hk)



Central (Man Kwong Street – Ferry Pier No. 3)



Hong Kong Station (Man Cheung Street)

Cyberport Facilities Management Office:  
Unit 404, L4, IT Street, Core A,  
Cyberport 3, 100 Cyberport Road, Hong Kong  
Tel: 3166-3111 Email: [cs@cyberport.com.hk](mailto:cs@cyberport.com.hk)

### Route 8A: Causeway Bay Route – Morning Services 08:35

Causeway Bay (Sunning Road) → Cyberport 2 → Cyberport 3



Causeway Bay (Sunning Road)



Drop-off area at Cyberport 2

Cyberport Facilities Management Office:  
Unit 404, L4, IT Street, Core A,  
Cyberport 3, 100 Cyberport Road, Hong Kong  
Tel: 3166-3111 Email: [cs@cyberport.com.hk](mailto:cs@cyberport.com.hk)



Drop-off area at Cyberport 3

### Route 8B: Causeway Bay Route – Evening Services 18:30

Cyberport 2 → Aberdeen (Aberdeen Praya Road) → Causeway Bay (Sunning Road)



Cyberport 2



Aberdeen (Aberdeen Praya Road)

Cyberport Facilities Management Office:  
Unit 404, L4, IT Street, Core A,  
Cyberport 3, 100 Cyberport Road, Hong Kong  
Tel: 3166-3111 Email: [cs@cyberport.com.hk](mailto:cs@cyberport.com.hk)



### Route 9A: Mong Kok Route – Morning Services 08:20

Mong Kok (Yim Po Fong Street) → Mong Kok (Sai Yeung Choi Street South) → Olympic (Cherry Street) → Cyberport 2 → Cyberport 3



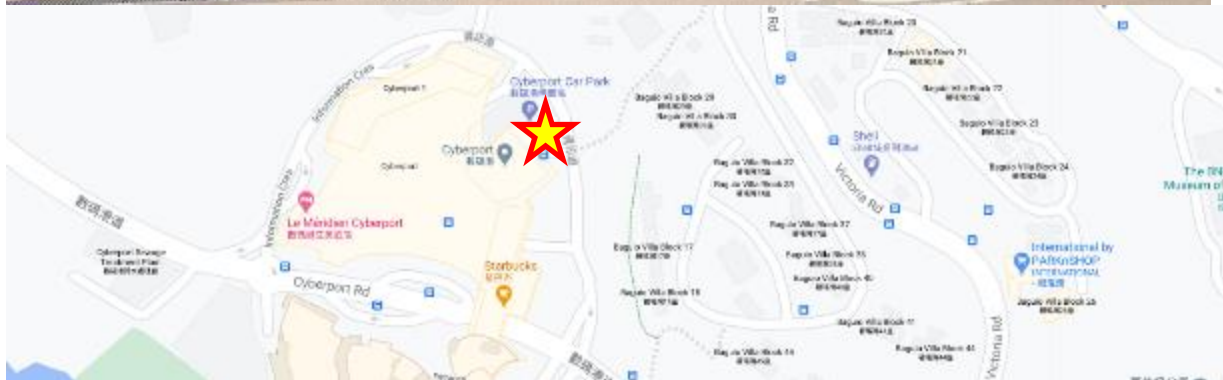
Mong Kok (Yim Po Fong Street)



Mong Kok (Sai Yeung Choi Street South)



Olympic (Cherry Street)



Drop-off area at Cyberport 2

Cyberport Facilities Management Office:  
Unit 404, L4, IT Street, Core A,  
Cyberport 3, 100 Cyberport Road, Hong Kong  
Tel: 3166-3111 Email: [cs@cyberport.com.hk](mailto:cs@cyberport.com.hk)



Drop-off area at Cyberport 3

**Route 9B: Mong Kok Route – Evening Services 17:45 / 18:20**

Cyberport 2 → Olympic (Pok Man Street) → Yau Ma Tei (City View Hotel) → Mong Kok (Yim Po Fong Street) → Mong Kok East (Argyle Street)



Cyberport 2



Olympic (Pok Man Street)



Yau Ma Tei (City View Hotel)



Mong Kok (Yim Po Fong Street)



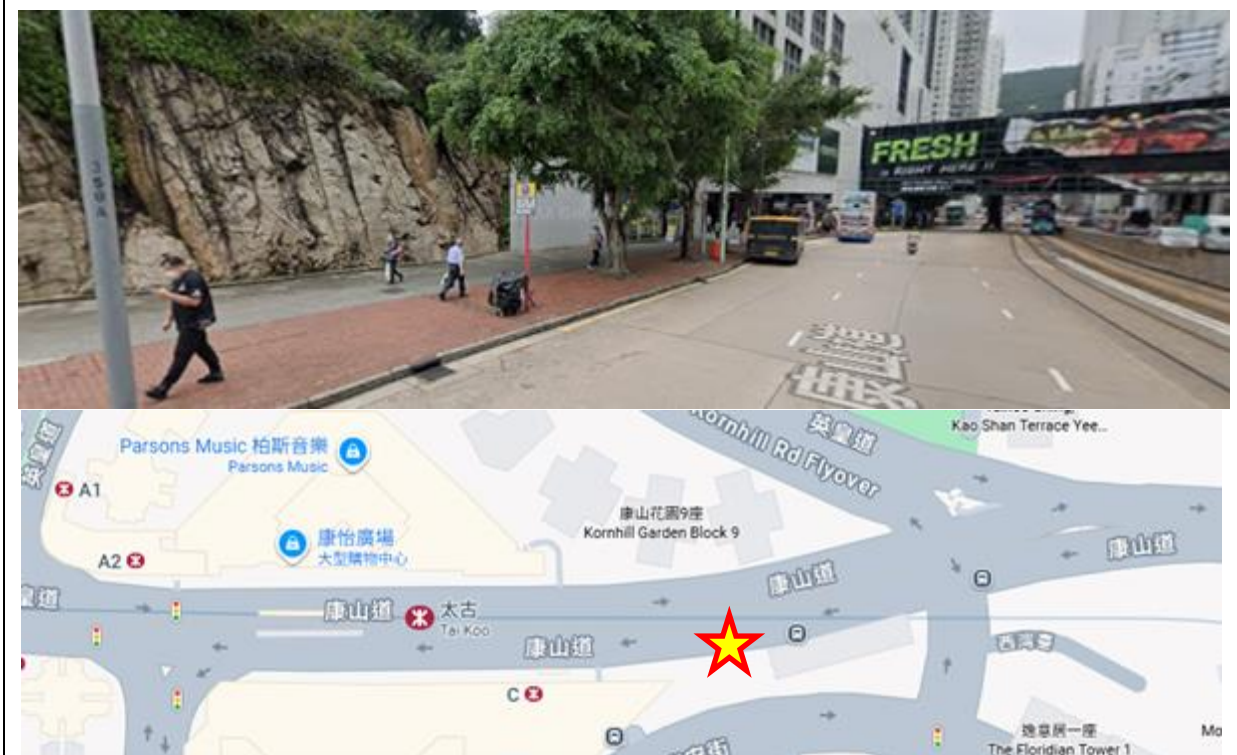
Mong Kok East (Argyle Street)

### Route 10A: Yau Tong Route – Morning Services 08:10 / 08:15

Yau Tong (Cha Kwo Ling Road) → Tai Koo (Kornhill Road) → Cyberport 2  
→ Cyberport 3



Yau Tong (Cha Kwo Ling Road)



Tai Koo (Kornhill Road)

Cyberport Facilities Management Office:  
Unit 404, L4, IT Street, Core A,  
Cyberport 3, 100 Cyberport Road, Hong Kong  
Tel: 3166-3111 Email: [cs@cyberport.com.hk](mailto:cs@cyberport.com.hk)



Drop-off area at Cyberport 2



Drop-off area at Cyberport 3

**Route 10B: Yau Tong Route – Evening Services 17:45 / 18:15**

Cyberport 2 → Tai Koo (Kornhill Road) → Yau Tong (Cha Kwo Ling Road)



Cyberport 2



Tai Koo (Kornhill Road)



### Route 11A: Yuen Long Route – Morning Services 07:20

Yuen Long (Wang Lok Street) → Tuen Mun (Heung Sze Wui Road) →  
Tsuen Wan (Tai Ho Road North Southbound bus stop) → Annex → Cyberport 3



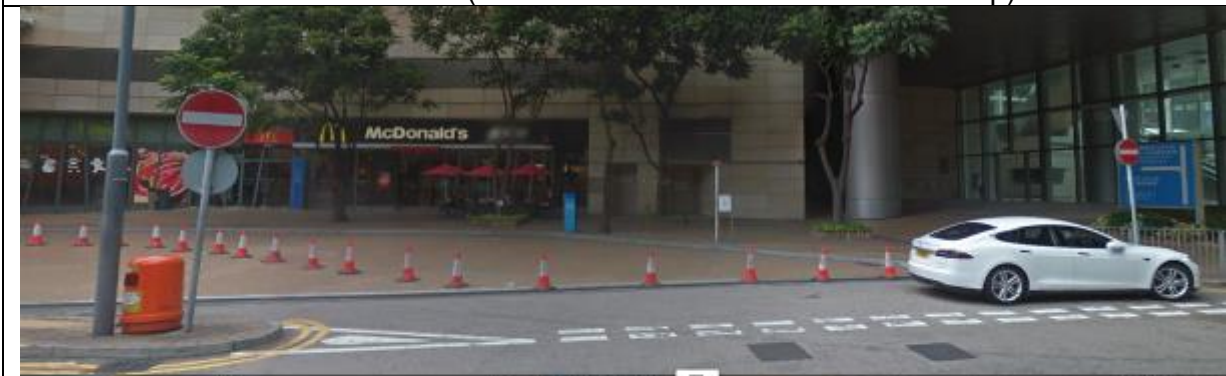
Yuen Long (Wang Lok Street)



Tuen Mun (Heung Sze Wui Road)



Tsuen Wan (Tai Ho Road North Southbound bus stop)



The Annex, Cyberport

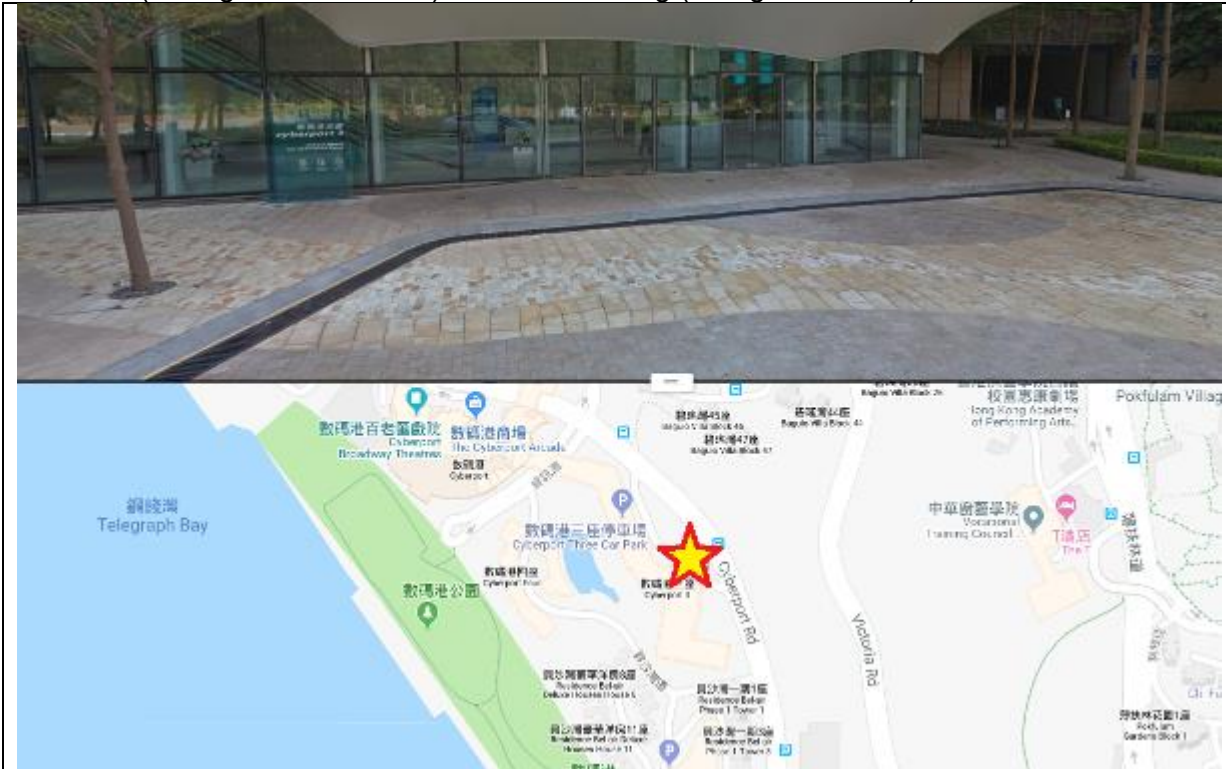
Cyberport Facilities Management Office:  
Unit 404, L4, IT Street, Core A,  
Cyberport 3, 100 Cyberport Road, Hong Kong  
Tel: 3166-3111 Email: [cs@cyberport.com.hk](mailto:cs@cyberport.com.hk)



Cyberport Facilities Management Office:  
Unit 404, L4, IT Street, Core A,  
Cyberport 3, 100 Cyberport Road, Hong Kong  
Tel: 3166-3111 Email: [cs@cyberport.com.hk](mailto:cs@cyberport.com.hk)

### Route 12B: Yuen Long Route – Evening Services 18:15

Cyberport 3 → Tsuen Wan (Tai Ho Road North Southbound bus stop) → Tuen Mun (Heung Sze Wui Road) → Yuen Long (Wang Lok Street)



Drop-off area at Core E, Cyberport 3



Tsuen Wan (Tai Ho Road North Southbound bus stop)

Cyberport Facilities Management Office:  
Unit 404, L4, IT Street, Core A,  
Cyberport 3, 100 Cyberport Road, Hong Kong  
Tel: 3166-3111 Email: [cs@cyberport.com.hk](mailto:cs@cyberport.com.hk)



Tuen Mun (Heung Sze Wui Road)



Yuen Long (Wang Lok Street)

Cyberport Facilities Management Office:  
Unit 404, L4, IT Street, Core A,  
Cyberport 3, 100 Cyberport Road, Hong Kong  
Tel: 3166-3111 Email: [cs@cyberport.com.hk](mailto:cs@cyberport.com.hk)

**Terms and Conditions**

1. Passengers should arrive at the boarding point 5 minutes before the departure time.
2. The bus operator will not accept any liability whatsoever except those taken up by vehicle's insurer in accordance with the terms and conditions written on the Certificate of Insurance issued to the vehicles as required by the Motor Vehicles Insurance (Third Party Risks) Ordinance.
3. In case of disputes, Hong Kong Cyberport Management Company Ltd and its appointed facilities management service provider reserves the right of final decision.